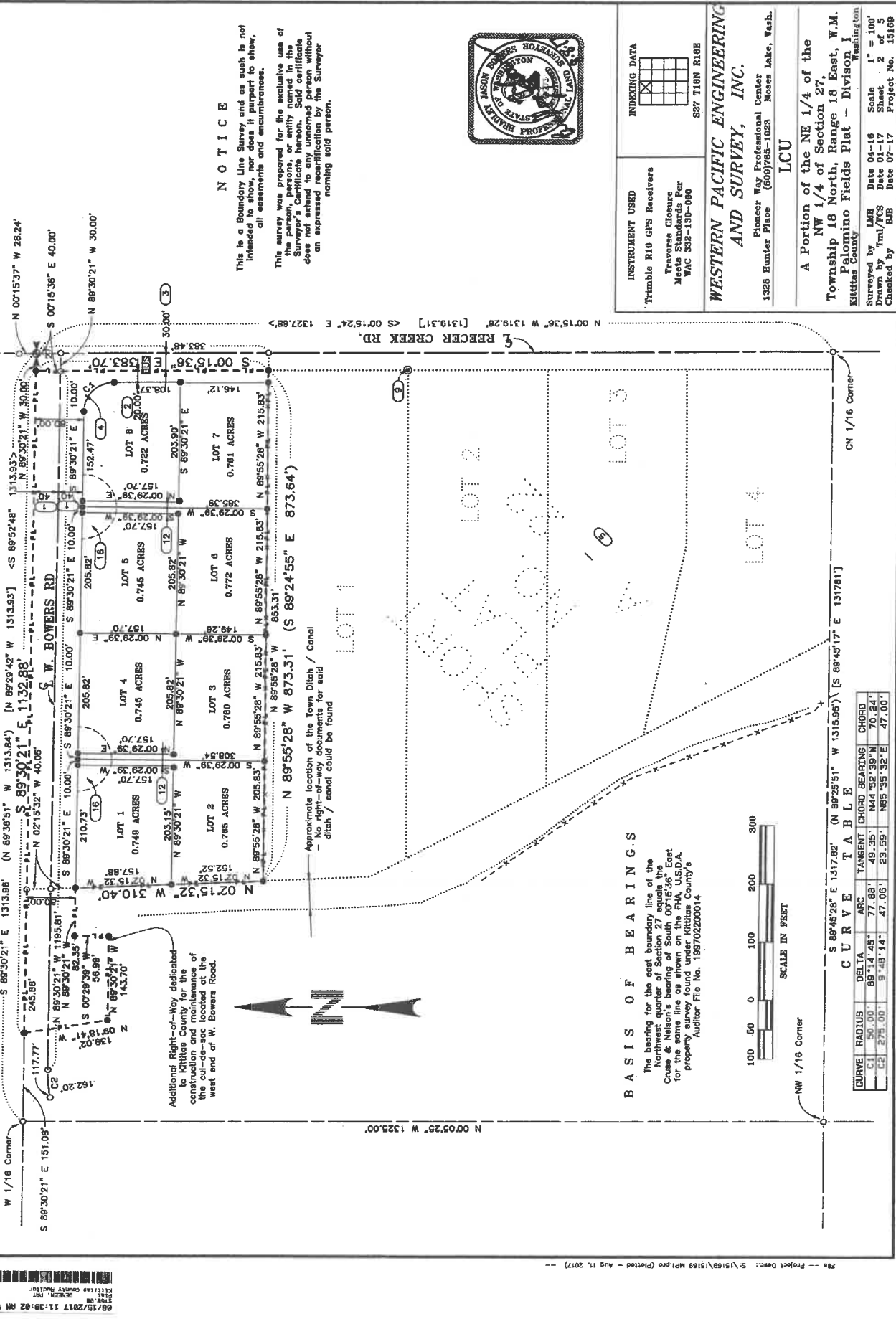




# PALOMINO FIELDS PLAT - DIVISION I

## A PORTION OF THE NE 1/4 OF THE NW 1/4 OF SECTION 27, TOWNSHIP 18 NORTH, RANGE 18 EAST, W.M.

### KITITAS COUNTY, WASHINGTON



**B A S I S O F B E A R I N G S**

The bearing for the east boundary line of the Northwest quarter of Section 27 equals the Cruise & Nelson's bearing of South 00°15'36" East for the same line as shown on the P.M.A. U.S.D.A. property survey found under Kittitas County's Auditor File No. 19570220014

CURVE	RADIUS	DELTA	ARC	TANGENT	CHORD BEARING	CHORD
C1	50.00	89°14'45"	77.88'	49.35'	N44°52'39"W	70.24'
C2	275.00	9°48'14"	47.06'	25.59'	N85°55'32"E	47.00'

**C U R V E T A B L E**

S 89°45'28" E 1317.82' (N 89°25'51" W 1315.95') [S 89°45'17" E 1317.81']  
NW 1/16 Corner

SCALE IN FEET  
100 50 0 100 200 300

File - Project Desc: S:\15108\15108 MPRO (Plotted - Aug 11, 2017)